

**STRONG
AND
CLEAN**



ANNOUNCING STAINLESS STEEL

CONTINUOUS HINGES

NGP's New Line of Stainless Steel Continuous Hinges
Feature Proven Technology:

Pin and Barrel Design

Medical Type Flanged Bearings

For Doors Weighing Up To 600 lbs.

25 Year Warranty

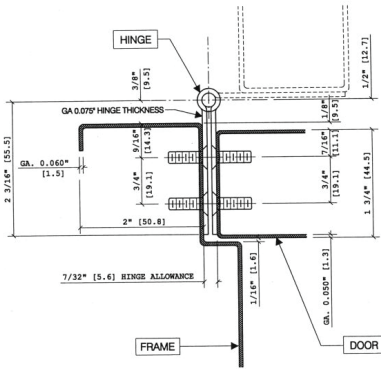
Resulting in a product that cycles with:
Dust Free Quiet Operation • ANSI Grade 1 Performance



Stainless Steel Continuous Hinges

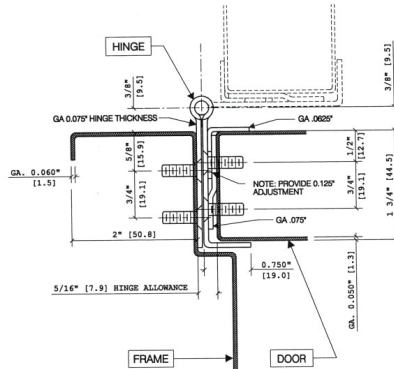
Concealed

FULL MORTISE (EDGE MOUNT)



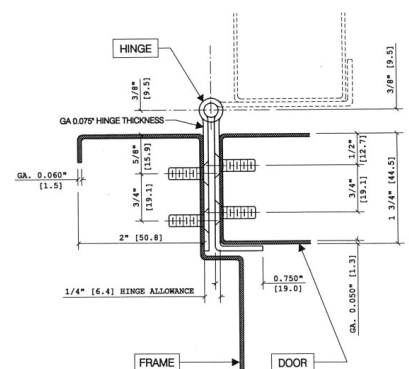
SS300

FULL WRAP EDGE GUARD (EDGE MOUNT)



SS305

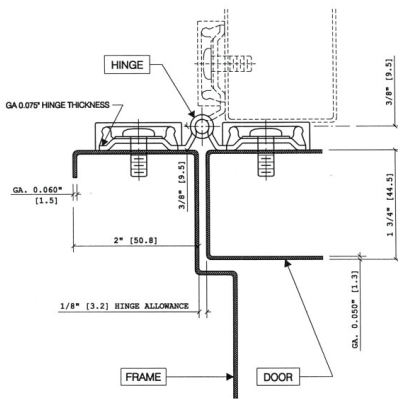
HALF WRAP EDGE GUARD (EDGE MOUNT)



SS315

Full Surface

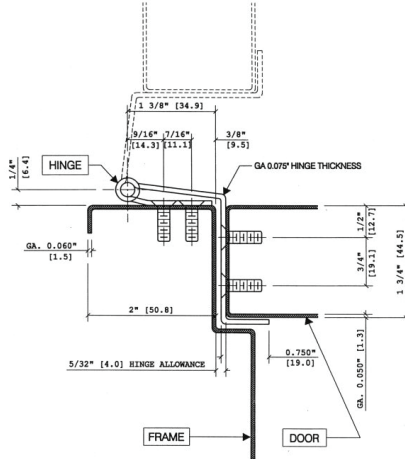
FULL SURFACE (FLUSH)



SS302

Swing Clear

SWING CLEAR HINGE GUARD



SS311

14 gauge type 304 stainless steel pin and barrel design

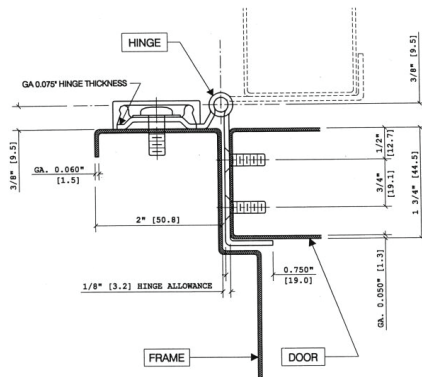
FINISHES

Brushed Stainless Steel
US32D (630)
Optional: Polished
US32 (629)



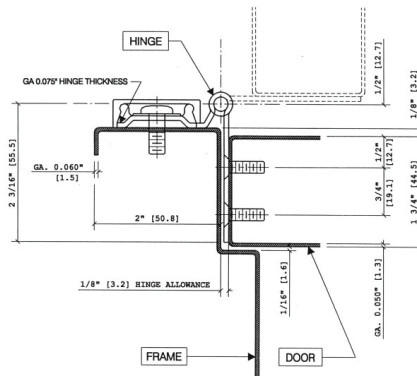
Half Mortise

HALF MORTISE/GUARD (EDGE MOUNT)



SS306

HALF MORTISE (EDGE MOUNT)



SS304

Furnished with TEK M.S., wood screws
Std. Lengths 83", 85", 95", 119"

AVAILABLE OPTIONS

1/2 Wood Screws
Torx Security Screws
Cut to Net Length
Anti-Ligature Hospital Tip
Dutch Door Prep
Welded Tips
Electric Thru-Wire
Electric Power Transfer Prep

