



14R

Door Bottom Seal

PRODUCT CUT SHEET

PROJECT:
SUBMITTED BY:
DATE:
NOTES:

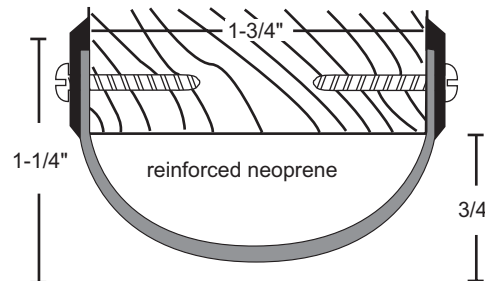
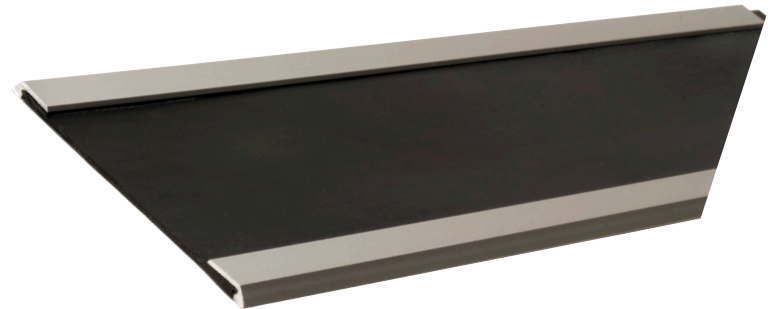
Material

Aluminum Alloy 6063, T5 Temper
Synthetic Rubber Polymer Blend: Chloroprene and EPDM
Neoprene is Black

- Very Good Abrasion Resistance, Tensile Strength and Memory
- Flame Resistant
- Moisture Resistant
- Temperature Range -20°F to 200°F
- Good Resistance to Ozone, Sunlight and Aging
- Available for 2 1/4" Thick Doors - Specify

Finishes

- 14RA Anodized Aluminum
- 14RB Gold
- 14RDKB Dark Bronze



NGP-GKT-14R-PCS-1220-A