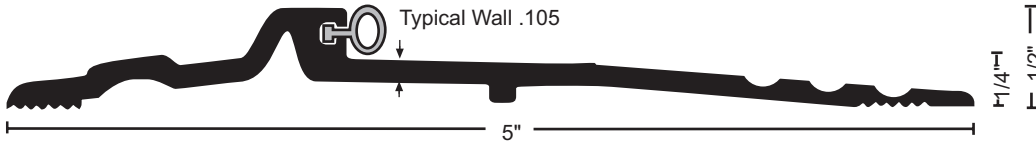
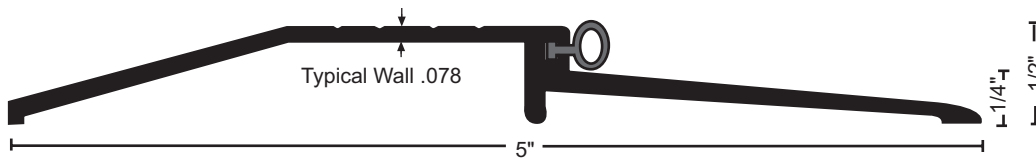


ADA Compliant Bumper Seal Thresholds

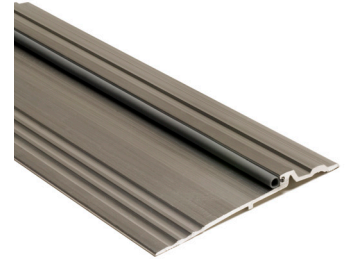
All thresholds this section



896 .64 lbs./ft.
896DKB .64 lbs./ft. **BHMA**



950 .50 lbs./ft.
950DKB .50 lbs./ft. **BHMA**
Excellent for use with Automatic Door Bottoms



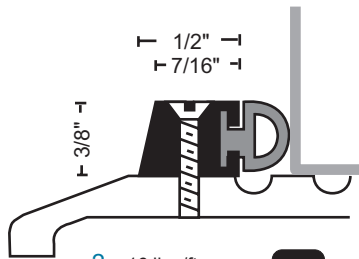
BUMPER SEAL
Seals against the door providing weather resistance

Vinyl ("V") supplied unless other material specified

Options:
NGP-TPV ("N")
Silicone ("S")

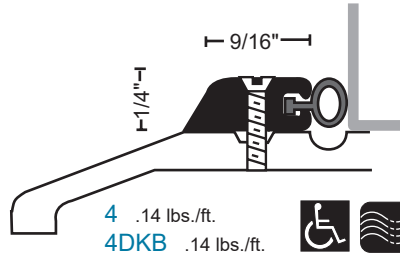
Stop Strips

All stop strips this section



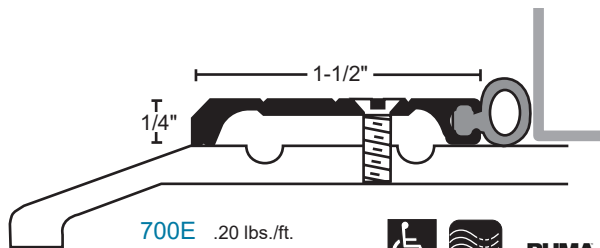
2 .16 lbs./ft.
2DKB .16 lbs./ft. **BHMA**

#6 self-tapping machine screw provided



4 .14 lbs./ft.
4DKB .14 lbs./ft. **BHMA**

#6 self-tapping machine screw provided



700E .20 lbs./ft.
700EDKB .20 lbs./ft. **BHMA**

#10 self-tapping machine screw provided

MATERIALS & FINISHES

- Aluminum mill finish
- DKB - Aluminum dark bronze finish



• Optional: Slip Resistant SIA Finish

FASTENERS

#10 x 1-1/2" FH zinc plated wood screws furnished. Dark bronze supplied with DKB thresholds.