



3X713

Floor Closer Threshold

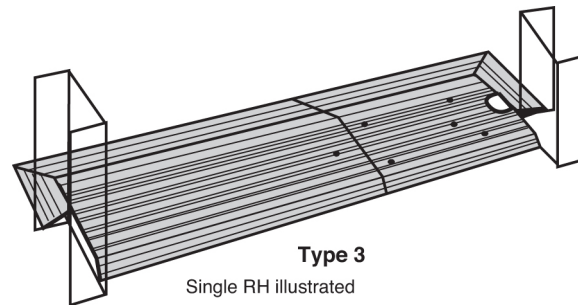
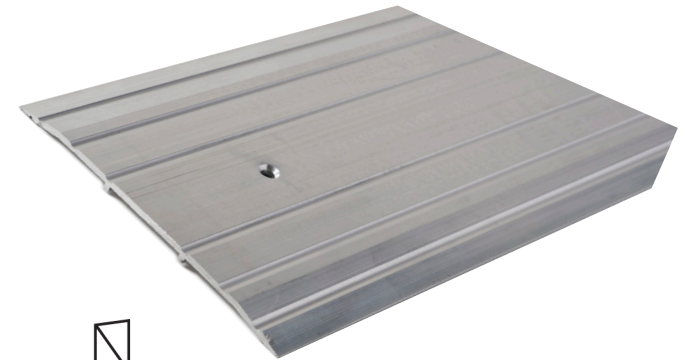
PRODUCT CUT SHEET

PROJECT:
SUBMITTED BY:
DATE:
NOTES:

Material

Aluminum Alloy 6063, T5 Temper

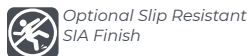
- ▶ 7" Wide x ¼" Tall
- ▶ Fluted Top
- ▶ BHMA Certified to ANSI/BHMA A156.21 1,000 Lb. Load Test
- ▶ Thresholds Can Be Fabricated For Use With Any Floor Closer
- ▶ Typical Wall Thickness: .125"
- ▶ Weight: 1.01 Lbs./Ft.
- ▶ #10 x 1 ½" FH Zinc Plated Wood Screws Included. Dark Bronze Supplied With DKB Thresholds



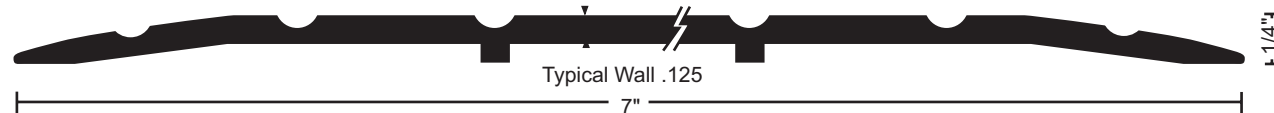
Finishes

- Mill Finish
- DKB - Dark Bronze Finish

Options



Optional Slip Resistant SIA Finish



NGP MEMPHIS
 4985 East Raines Road
 Memphis, TN 38118
orders@ngp.com

NGP VEGAS
 4584 Calimesa Street
 Las Vegas, NV 89115
vegasorders@ngp.com

NGP-THR-3X713-PCS-0223-A

ngp.com
 1-800-NGP-RUSH