



# 425HD

Heavy Duty Threshold

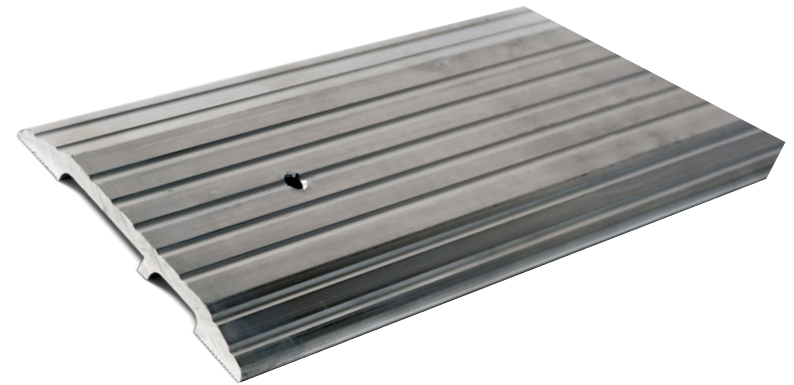
## PRODUCT CUT SHEET

PROJECT:
SUBMITTED BY:
DATE:
NOTES:

### Material and Features

Aluminum Alloy 6063, T5 Temper

- ▶ 5" Wide x 1/2" Tall
- ▶ Fluted Top
- ▶ BHMA Certified to ANSI A156.21 Heavy Duty 10,000 lb. Load Test
- ▶ Recommended for Delivery/Storage Doorways Where Heavier Loads Travel
- ▶ For Use Where Forklift or Vehicular Traffic Occurs
- ▶ Typical Wall Thickness: .244"
- ▶ Weight: 1.6 Lbs./Ft.
- ▶ #10 x 1 1/2" FH Zinc Plated Wood Screws Included. Dark Bronze Supplied With DKB Thresholds

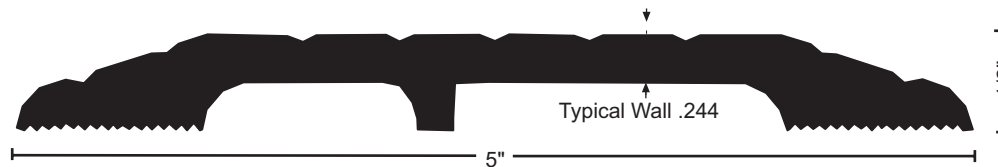
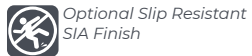


### Finishes

Mill Finish

DKB - Dark Bronze Finish

### Options



NGP-THR-425HD-PCS-1023-A

### NATIONAL GUARD PRODUCTS, INC.

#### MEMPHIS

4985 East Raines Road  
Memphis, TN 38118

#### CARSON CITY

3689 Arrowhead Drive  
Carson City, NV 89706

Fax: (800) 255-7874

Email: info@ngp.com

Quotes: quotes@ngp.com

Orders: orders@ngp.com

**ngp.com**  
1-800-NGP-RUSH