



# 512SS

## Stainless Steel 1/2" Saddle Threshold

### PRODUCT CUT SHEET

PROJECT:
SUBMITTED BY:
DATE:
NOTES:

#### Material and Features

Stainless Steel Type 304

- ▶ 5" Wide x 1/2" Tall
- ▶ Smooth Top
- ▶ BHMA Certified to ANSI/BHMA A156.21 1,000 Lb. Load Test
- ▶ Typical Wall Thickness: .120"
- ▶ Weight: 2.07 Lbs./Ft.
- ▶ #10 x 1 1/2" FH Stainless Steel Wood Screws Included

#### Finishes

Mill Finish

DKB - Dark Bronze Finish

#### Optional Finishes

Polished US32, 629, suffix "POL",

Brushed US32D, 630, suffix "Brushed"

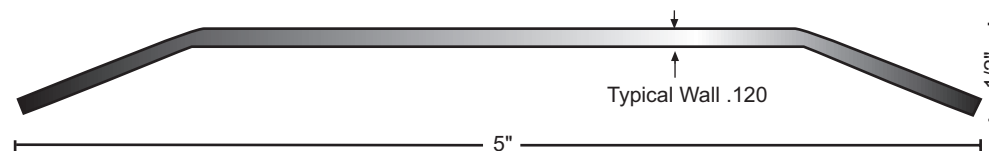
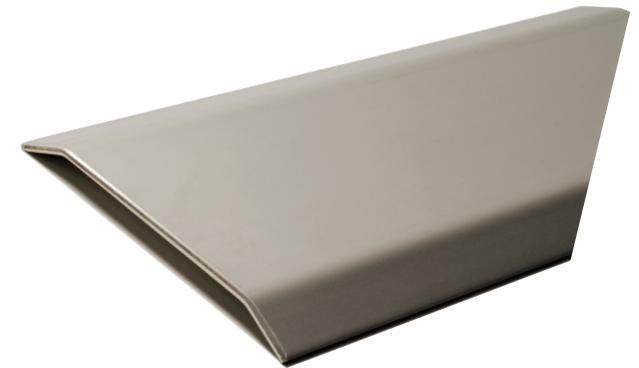
#### Options



Optional Slip Resistant  
SIA Finish



**BHMA**  
CERTIFIED



NGP-THR-512SS-PCS-0321-A