



# 513HD

Heavy Duty Threshold

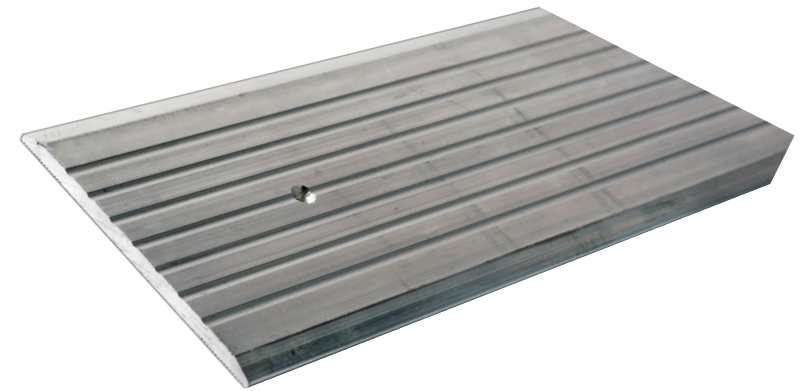
## PRODUCT CUT SHEET

PROJECT:
SUBMITTED BY:
DATE:
NOTES:

### Material and Features

Aluminum Alloy 6063, T5 Temper

- ▶ 5" Wide x ¼" Tall
- ▶ Fluted Top
- ▶ BHMA Certified to ANSI/BHMA A156.21 1,000 Lb. Load Test
- ▶ Recommended for Delivery/Storage Doorways Where Heavier Loads Travel
- ▶ For Use Where Forklift or Vehicular Traffic Occurs
- ▶ Typical Wall Thickness: .244"
- ▶ Weight: 1.4 Lbs./Ft.
- ▶ #10 x 1 ½" FH Zinc Plated Wood Screws Included. Dark Bronze Supplied With DKB Thresholds



### Finishes

Mill Finish

DKB - Dark Bronze Finish

### Options



Optional Slip Resistant  
SIA Finish



**BHMA**  
CERTIFIED

NGP-THR-513HD-PCS-0321-A