



653

Offset Threshold

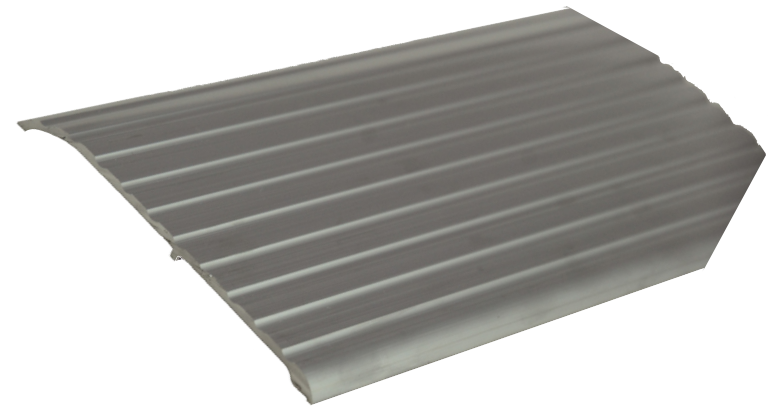
PRODUCT CUT SHEET

| |
|---------------|
| PROJECT: |
| SUBMITTED BY: |
| DATE: |
| NOTES: |

Material and Features

Aluminum Alloy 6063, T5 Temper

- ▶ 5 1/2" Wide x 1/2" Tall
- ▶ Fluted top
- ▶ BHMA Certified to ANSI/BHMA A156.21 1,000 Lb. Load Test
- ▶ Typical Wall Thickness: .125"
- ▶ Weight: .78 Lbs./Ft.
- ▶ #10 x 1 1/2" FH Zinc Plated Wood Screws Included. Dark Bronze Supplied With DKB Thresholds



Finishes

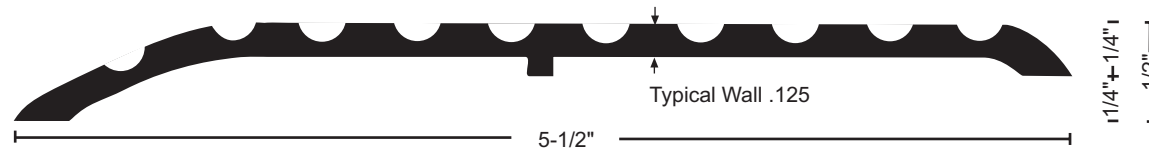
Mill Finish

DKB - Dark Bronze Finish

Options



Optional Slip Resistant SIA Finish



NGP MEMPHIS
4985 East Raines Road
Memphis, TN 38118
orders@ngp.com

NGP VEGAS
4584 Calimesa Street
Las Vegas, NV 89115
vegasorders@ngp.com

NGP-THR-653-PCS-0223-A

ngp.com
1-800-NGP-RUSH