



# 680

## Nylon Brush Heavy-Duty Surface Automatic Door Bottom

### PRODUCT CUT SHEET

#### Material

Aluminum Alloy 6063, T6 Temper  
Synthetic Polymer: Polyamide  
Nylon Brush is Black

- BHMA Certified to ANSI/BHMA A156.22, 1,000,000 Cycle Test-Grade 1
- BHMA Certified to ANSI/BHMA A156.22 Performance Tests for Heat and Cold
- EPDM Rubber Insert Protects Against Water Penetration and Provides an Effective Bottom Seal for Exterior Doors
- Excellent Abrasion Resistance, Flexibility and Memory
- Moisture-Resistant
- Retains Insecticides Well
- Temperature Range -60°F to 300°F
- REACH and RoHS Compliant
- Mounts on Push Side of Door
- Use with a Threshold for Maximum Sealing Capability
- Nylon Brush Recommended for Carpet Applications Where No Threshold is Provided
- Specify Exact Net Length Required to Avoid Field Sizing
- ADB's from 12" to 18" Can be Cut Down ½". ADB's 20" and Over Can be Cut Down up to 1½"
- Minimum Length 11½", Maximum Length 60"
- ¾" Max Drop
- Steel End Caps Furnished Standard – Black Finish
- All Automatic Door Bottoms are Handed. Right Hand Supplied Unless Specified. Field Reversible

#### Finishes

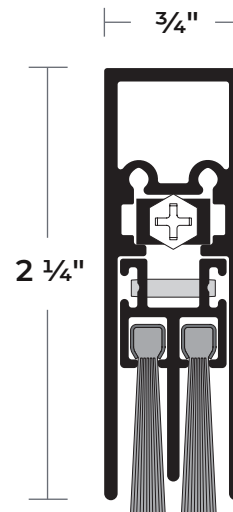
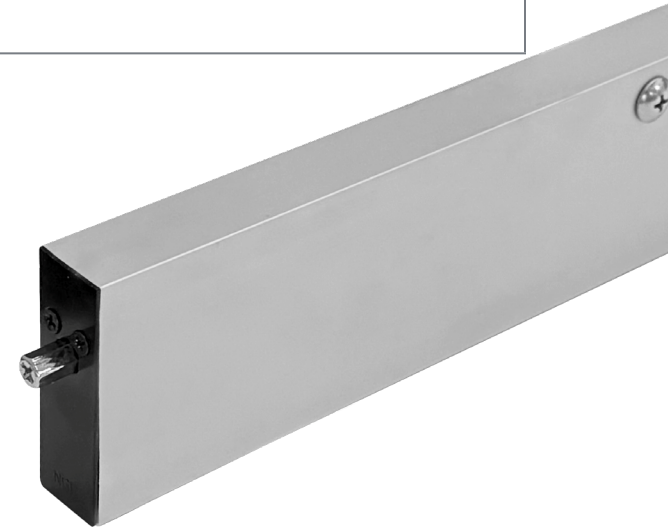
680A Anodized Aluminum  
680DKB Dark Bronze

#### Options

Lead Insert Available for Radiation Shield – Specify 'Lead Lined'



PROJECT:
SUBMITTED BY:
DATE:
NOTES:



NGP-GKT-680-PCS-0426-A

### NATIONAL GUARD PRODUCTS, INC.

#### MEMPHIS

4985 East Raines Road  
Memphis, TN 38118

#### CARSON CITY

3689 Arrowhead Drive  
Carson City, NV 89706

Fax: (800) 255-7874

Email: info@ngp.com

Quotes: quotes@ngp.com

Orders: orders@ngp.com

**ngp.com**  
1-800-NGP-RUSH