



9245

Intumescent Door Bottom Shoe

INSTALLATION INSTRUCTION

For the complete list of GapGuard Fire Door Accessories, the most up-to-date product information and installation instructions, scan the QR code or visit ngp.com.



Gap Solution for Excessive Fire Door Bottom Undercut/Clearance up to 45 Minute
NGP-Edge® Intumescent Door Shoe



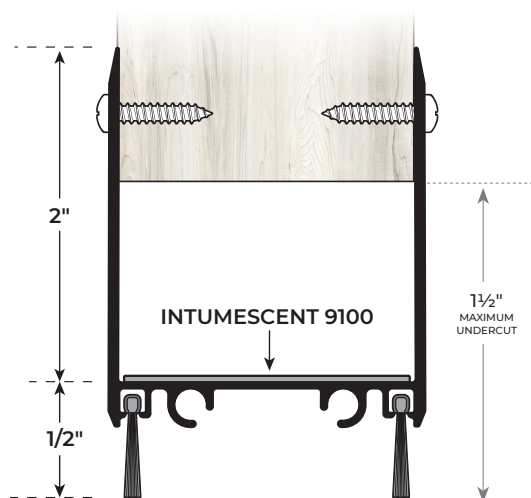
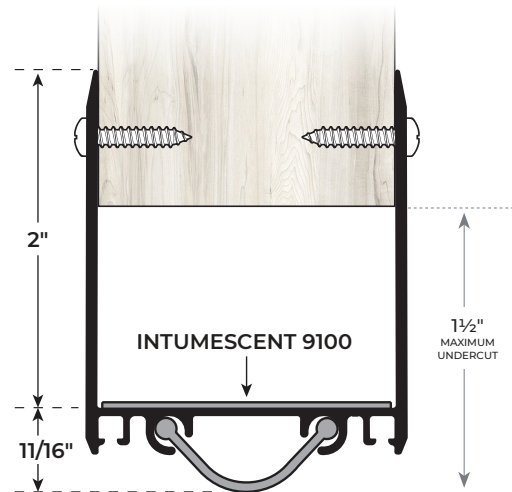
UL CERTIFIED FOR USE IN THE US AND CANADA

Limitations & Allowances:

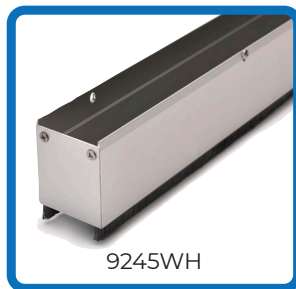
- For use on up to 45 minute UL10B and UL10C wood or hollow metal fire doors with bottom clearance exceeding 3/4", up to 1 1/2"
- UL certified for 45 minute fire doors with bottom clearance up to 1 1/2"

Installation Procedure:

1. Measure and cut metal retainer and gasketing insert to fit.
2. Position seal on door with gasket against sill.
3. Mark screw holes.
4. Drill pilot holes with a 7/64" bit.
5. Install with screws provided.
6. Slide gasketing into metal retainer.
7. Adjust height so that gasket does not impede proper closing and latching of door.



9245V



9245WH

NGP-GAP-9245-PRI-0625-A



MEMPHIS | CARSON CITY

NATIONAL GUARD PRODUCTS, INC.

MEMPHIS

4985 East Raines Road
Memphis, TN 38118

CARSON CITY

3689 Arrowhead Drive
Carson City, NV 89706

Fax: (800) 255-7874

Email: info@ngp.com

Quotes: quotes@ngp.com

Orders: orders@ngp.com

ngp.com
1-800-NGP-RUSH