



PLSL

STORM PRO™ Inverted Split Y Security Door Louver

PRODUCT CUT SHEET

PROJECT:
SUBMITTED BY:
DATE:
NOTES:

For 1 3/8" to 1 3/4" Thick Doors

- ▶ 12 Ga. Cold Rolled Steel Security Grille Frame with 1 3/16" square holes on 1" centers
- ▶ 20 Ga. Cold Rolled Steel Louver Blades
- ▶ Counter-Sunk Mounting Screw-Holes
- ▶ #8-32 Thru-Bolts
- ▶ Available in Uneven and Fractional Sizes
- ▶ Free Area 50%
- ▶ Gray Primer (GPZ) Powder Coat Finish

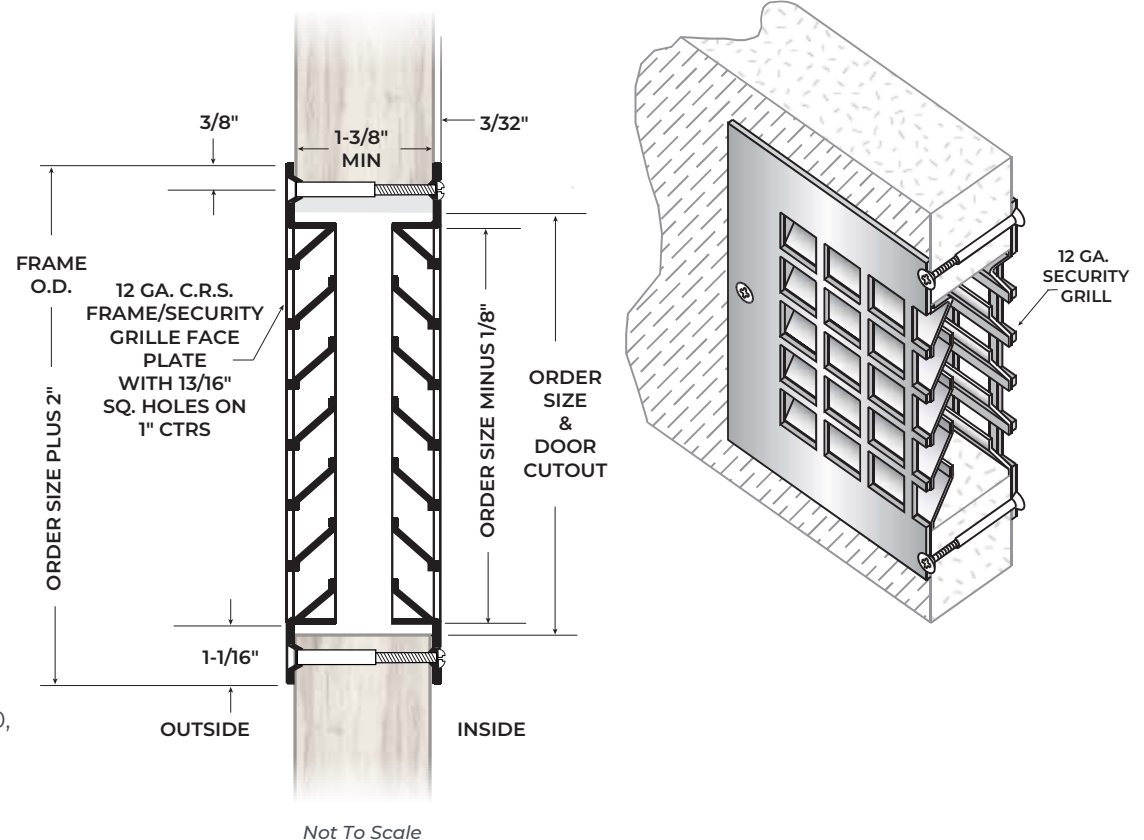
Available Options

- ▶ Powder Coat Color Options - See Color Chart on www.ngp.com
- ▶ Aluminum Insect Screen - 22 Ga. 3/8" Square Mesh Installed on Exterior Side Unless Requested Otherwise
- ▶ #8-32 One Way Vandal Resistant Security Screw Thru-Bolts
- ▶ Galvanneal - A40 Steel Blades (Not Available on Security Grilles)
- ▶ Zinc Electro-Plating (Not Available on Insect Screen)
- ▶ Type 304 Stainless Steel - Specify PLSL-SS
- ▶ Type 316 Stainless Steel - Specify PLSL-316SS
- ▶ Maximum Size for Hurricane Use is 36" x 72"

Windstorm Rated

- ▶ Louver for Use in Windstorm-Rated Assembly in Accordance with ANSI/ASTM E330, ANSI/ASTM E1886, ASTM E1996, AAMA/WDMA/CSA 101/I.S.2/A440, FEMA 320, FEMA 361 and ICC 500.
Design Pressure = +/- 70 PSF
Large Missile Impact = 350 ft. lbs.
Hazard - Hurricane

This Product is not Rated for Use on Fire-Rated Doors



NGP-LIT-PLSL-PCS-0123-B

NGP MEMPHIS
4985 East Raines Road
Memphis, TN 38118
orders@ngp.com

NGP VEGAS
4584 Calimesa Street
Las Vegas, NV 89115
vegasorders@ngp.com

ngp.com
1-800-NGP-RUSH