

ACCESSORIES

FOR ALUMINUM SLIDING DOOR HARDWARE

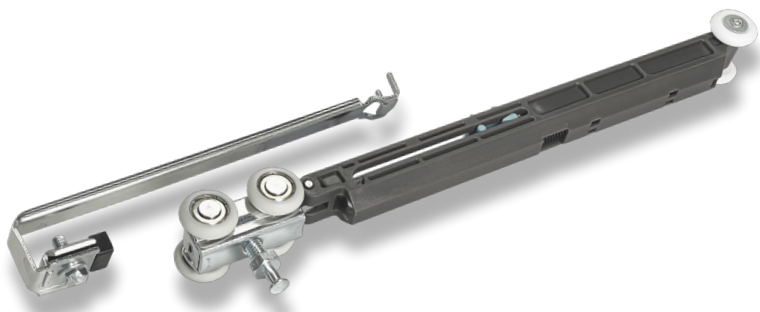


SOFT-CLOSE OPTIONS

SC

For Single Sliding Aluminum Hardware Sets with Doors 120 lbs. – 150 lbs. Each

- Designed for Doors 120 lbs. – 150 lbs. Each
- Minimum Door Width When Using One Soft-Close Device on a Single Door is 16"
- Minimum Door Width When Using Two Soft-Close Devices for Soft-Close Both Directions on a Single Door is 31"
- Slows Travel of the Door to Softly Close
- Soft-Close for Single Sliding Aluminum Hardware Sets
- For Both Directions Order "SCBY"



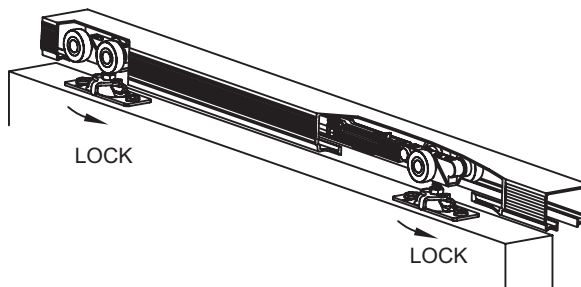
Ordering Info

SC	Single
SCBY	Set of Two

SC-LITE

For Single Sliding Aluminum Hardware Sets with Doors 65 lbs. – 115 lbs. Each

- Designed for Doors 65 lbs. – 115 lbs. Each
- Minimum Door Width When Using One Soft-Close Device on a Single Door is 12.5"
- Minimum Door Width When Using Two Soft-Close Devices for Soft-Close Both Directions on a Single Door is 25"
- Slows Travel of the Door to Softly Close
- For By-Pass and Bi-Parting Sliding Aluminum Hardware Sets. For Both Directions Order (2) Sets "SCBY-LITE"
- For Soft-Close Both Directions on Sidewall and Pocket Door Applications



Ordering Info

SC-LITE	Single
SCBY-LITE	Set of Two

