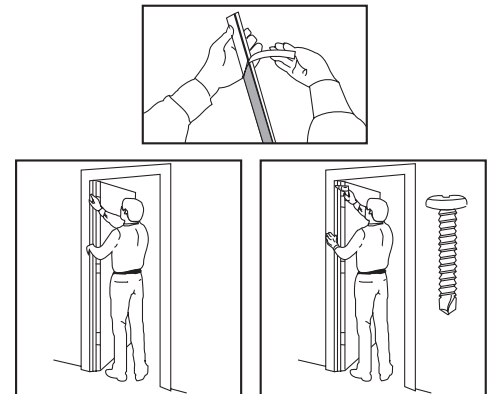


SELF-ADHESIVE GASKETING

FATT

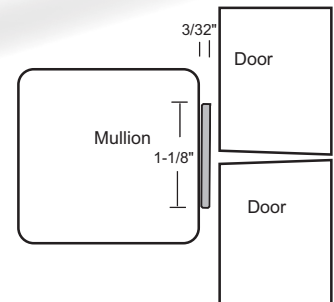
FAST ATTACH TWO-WAY TAPE

- Fast Attach Two-Way Tape Provides an Easy and Effective Alternative for Gasketing Installation. Two-Way Tape is Applied to the Metal Housing Insuring a Quick and Easy Installation. Then for Security, 3 Tek-Type Self-Drilling Screws are Provided to Further Secure Each Piece of Material to the Frame Stop. A No Problem Installation with No Holes to Drill.
- To Order Add Suffix "FATT" to Product Number. See Price List for Products Available with this Feature.
- FATT IS NOT CLASSIFIED FOR USE ON FIRE DOORS.



SEAL FOR MULLION APPLICATIONS

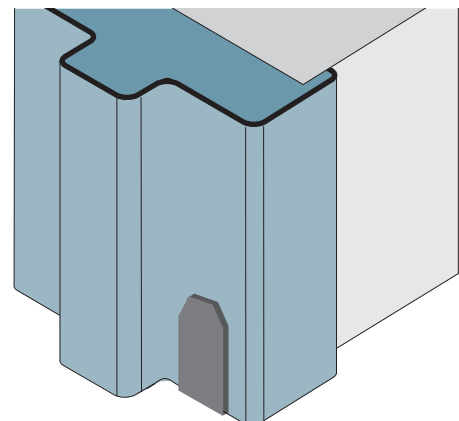
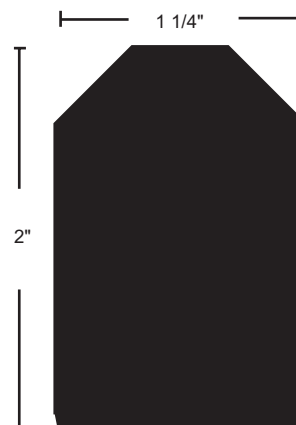
- Closed Cell Silicone Sponge Strip 1 1/8" Wide X 3/32" Thick with an Adhesive Strip for Mounting Directly to the Face of the Mullion that Doors Close Against
- Available in 86" and 96" Lengths
- Self-Adhesive: See Adhesive Specifications on Page G15



5100N	Black Silicone
5100S	Gray Silicone

CORNER PAD

- Helps Acoustics and Seals Corner Gap for Air Leakage Control. Apply to Jamb on Hinge Side, Opposite Bottom Corner of Door Edge.
- Self-Adhesive



54CP	Black Polypropylene Pile
-------------	--------------------------