



For the complete list of Stainless Steel Sliding Door Hardware, the most up-to-date product information and installation instructions, scan the QR code or visit ngp.com.



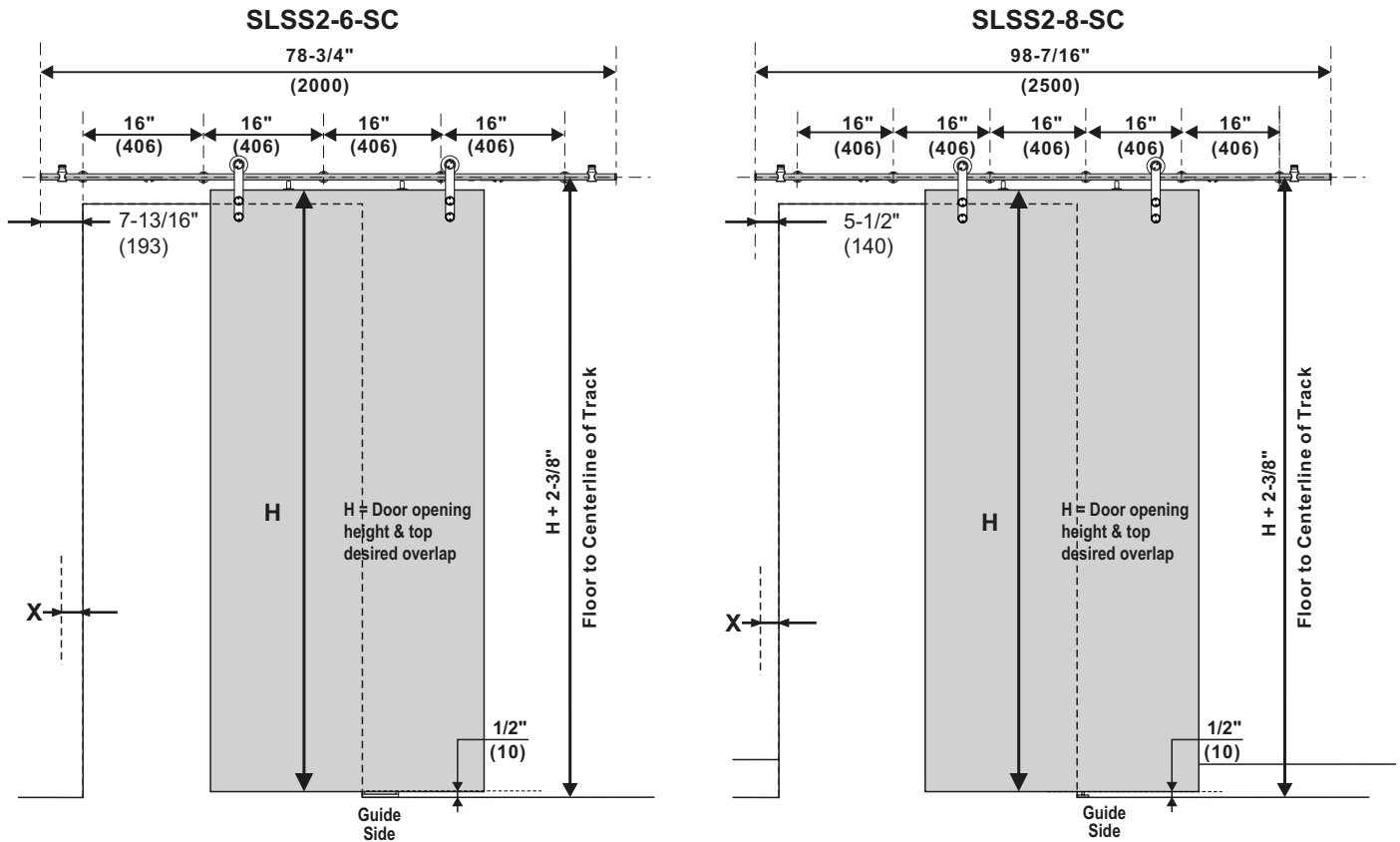
SLSS2-6-SC, SLSS2-8-SC

Stainless Steel Sliding Door Hardware – Soft Close

INSTALLATION INSTRUCTION

WARNING: Must be installed into wall blocking.

If you have questions about what type of wall blocking is required, consult a structural engineer.



Tools Required:

For low ceilings

Dimensions shown: Inches (mm)

Notes:

1. "X" = Door Overlap (2" overlap recommended)
2. Minimum door overlap on guide side is 2" (51).
3. Must be installed into wall blocking. If you have questions about what type of wall blocking is required, consult a structural engineer.
4. IMPORTANT: If bracket fasteners are loosened, they must be re-tightened using a minimum of 11 ft. lb. of torque.

Parts:

2M Track (x1)

(x5) (x5) M6x10 (x10) M6x70 (x5)

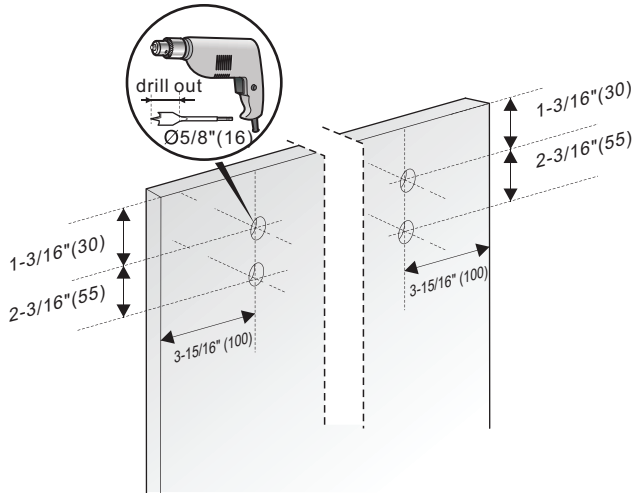
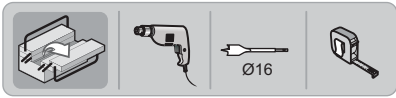
2.5M Track (x1)

(x6) M6x10 (x12) M6x70 (x6)

G 4mm(x1)
H 3mm(x1)
I 2mm(x1)
J (x1)
K (x2) ST4.2x25 (x6)
L (x1) (x2) ST4.2x25
Ø8 (x2)
M (x2)

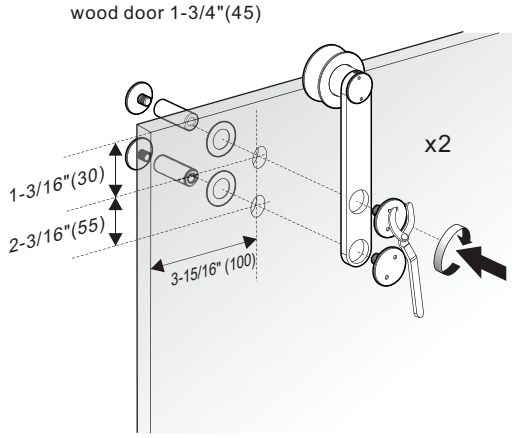
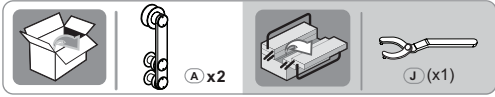
1. Prepare Door for Hangers

Drill four holes for two hangers.



2. Mount Hangers to Door

Attach hangers to door with tool (J) provided.

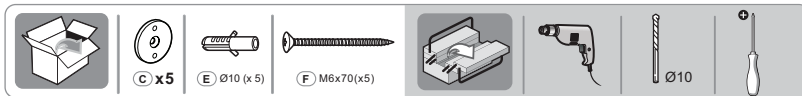
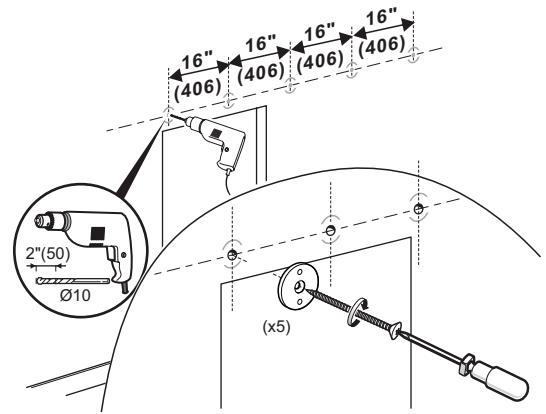


3. Attach Brackets

Locate centerline of track as shown on first page. Using a level, mark a horizontal line twice the door width long. Mark bracket screw locations, as shown on first page, into WALL BLOCKING. Attach wall portion of brackets as shown.

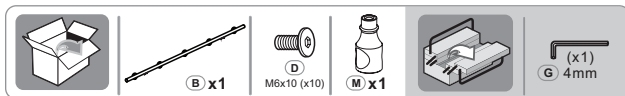
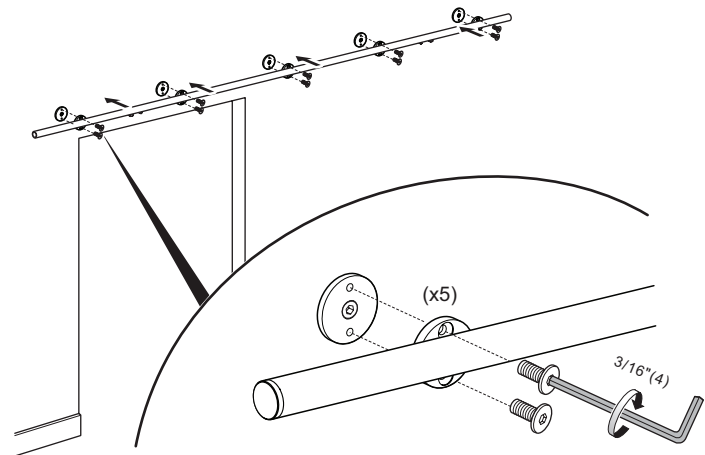
Optional drywall spacers SLSS-DWS

If using drywall spacers: use 3/4" drill bit to remove gypsum board at bracket locations. Use appropriate thickness spacers to replace gypsum board removed and seat against blocking.



4. Secure Track

Attach track to wall brackets as shown. Insert stops into track ends.



5. Fit Door Guide to Floor

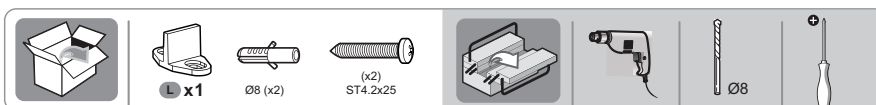
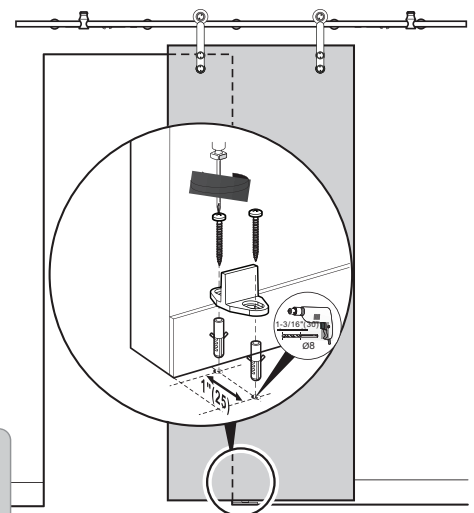
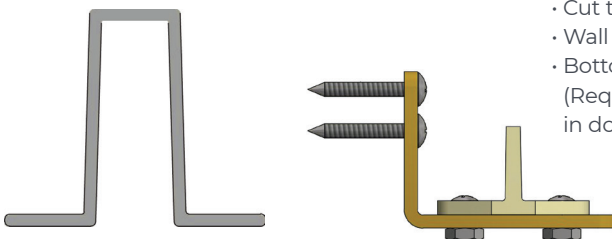
Mark for position of door guide.

Check post fasteners for tightness.

Mount door guide to floor with anchors and 2 ST4.2x25 screws.

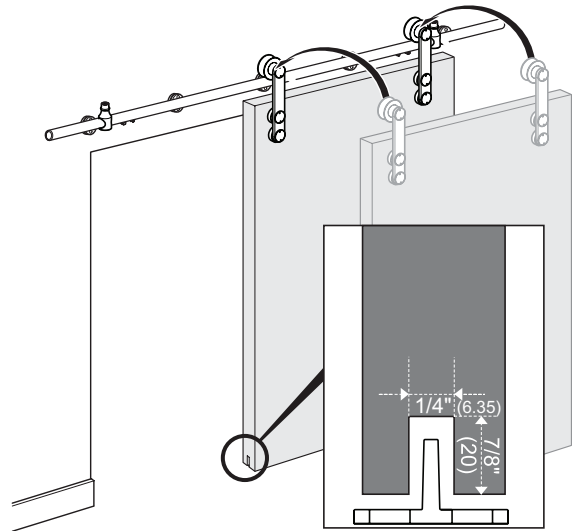
Options:

- Cut track to net length
- Wall Mounted Guide
- Bottom Channel Guide (Requires 3/8" x 7/8" route in door bottom)



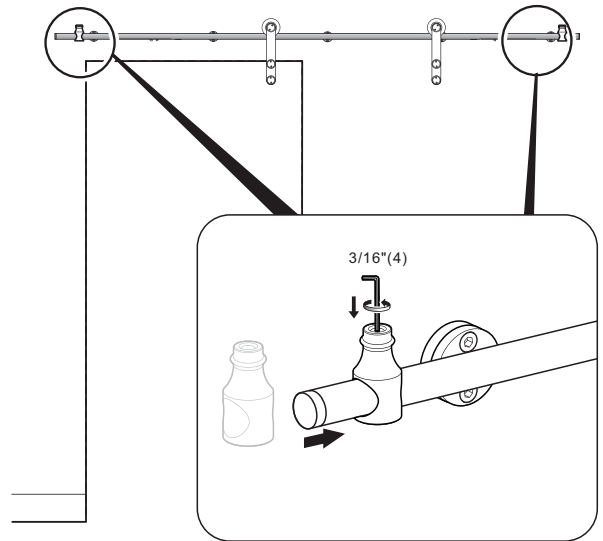
6. Hang Door

Route bottom of door to receive floor mounted guide as shown. Lift door onto track. Make adjustments to hangers so that door is plumb.

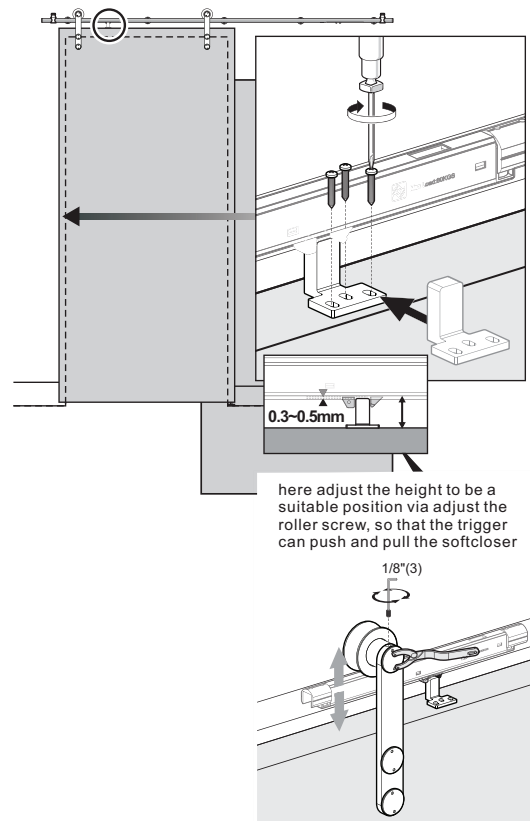
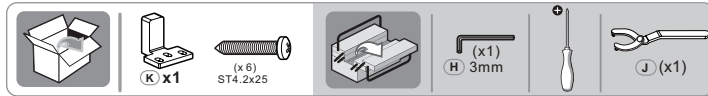


7. Adjust Stops

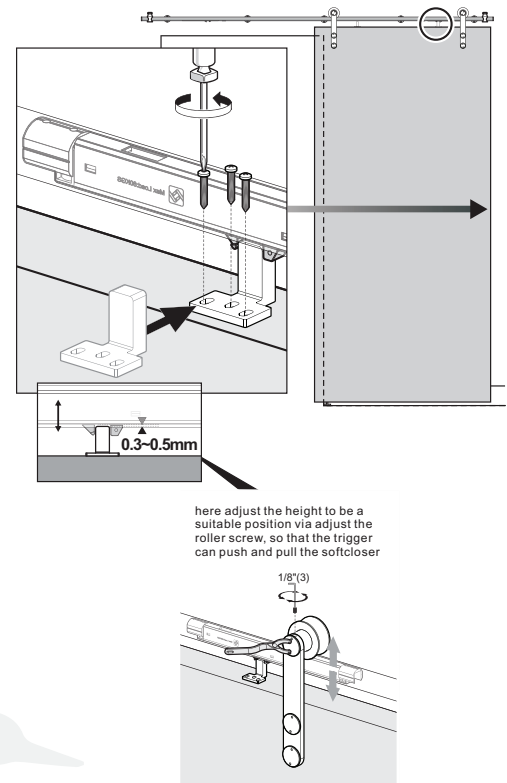
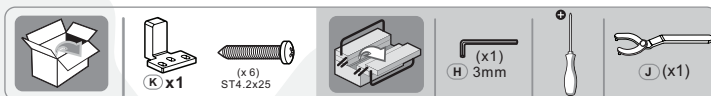
Adjust stops accordingly. Tighten set screw with sufficient force to drive set screw into bar after final adjustment.



8. Put the door at closed position and then put actuator between the fins of soft close and finally fasten the actuator on top of door panel.



9. Put the door at open position and then put actuator between the fins of soft close and finally fasten the actuator on top of door panel.



NGP-SLI-SLSS2-6-SC_SLSS2-8-SC-PRI-0625-A



NATIONAL GUARD PRODUCTS, INC.

MEMPHIS
4985 East Raines Road
Memphis, TN 38118
orders@ngp.com

CARSON CITY
3689 Arrowhead Drive
Carson City, NV 89706
carsonorders@ngp.com

Fax: (800) 255-7874
Email: info@ngp.com
Quotes: quotes@ngp.com

ngp.com
1-800-NGP-RUSH