



# SLSS2-8-SC

Stainless Steel Sliding Door Hardware — Barn Door Side Mount

## PRODUCT CUT SHEET

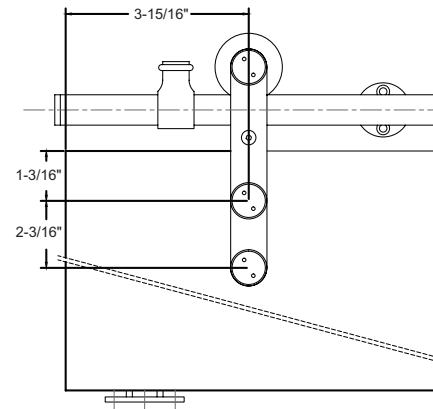
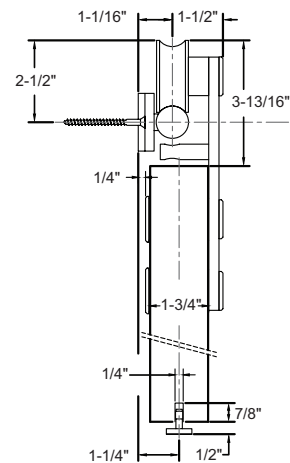
### Side Mount Round Track System – (With Soft Close) – Track Length 98 7/16"

- Fits 1 3/8" to 1 3/4" Thick Door Panel
- Brushed Stainless Steel 304
- Side Wall Mount
- Nylon Coated Stainless Steel Wheels for Smooth Operation
- Max Weight Load: 220 lbs.
- 5-Year Warranty
- Order Two Sets for Bi-Parting Applications
- Soft Close / Open Hardware is Included for Both Directions in Addition to the SLSS2-8 Complete Kit Contents

#### Complete Kits Include:

- (1) Track with Soft Close
- (2) Door Stops
- (2) Hangers
- (1) Floor Guide

SLSS2-8 includes: (6) Wall Attachments



PROJECT:
SUBMITTED BY:
DATE:
NOTES:

