



# SS315

## Concealed Stainless Steel Continuous Hinge

### PRODUCT CUT SHEET

PROJECT:
SUBMITTED BY:
DATE:
NOTES:

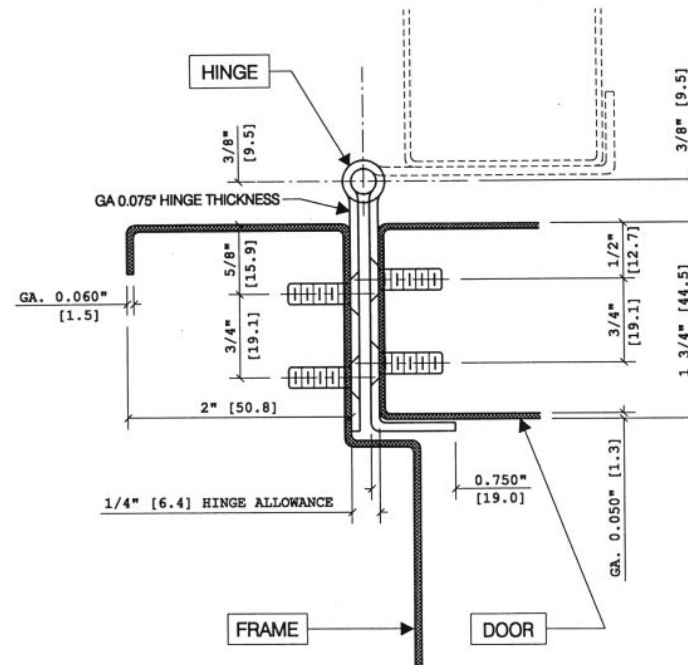
#### Half Wrap Edge Guard, for 1 3/4" Doors

- ▶ Heavy-Duty Type 304, 14-Gauge Stainless Steel
- ▶ Pin and Barrel Design
- ▶ Stainless Steel Hinge Pins
- ▶ Medical Type Self-Lubricating Flanged Bearings Between Each 2" Knuckle Provide Dust-Free Quiet and Smooth Operation
- ▶ For Doors Weighing up to 600 Lbs.
- ▶ 25-Year Warranty
- ▶ #10 x 1/2" TEK Screws for Metal Doors and Frames
- ▶ #10 x 1" Wood Screws for Wood Doors
- ▶ US32D (630) Brushed Finish
- ▶ Standard Lengths: 83", 85", 95", 119"

#### Options:

- ▶ Torx Security TEK Screws
- ▶ Cut to Net Length - Specify Door Handing
- ▶ Anti-Ligature Welded Hospital Tip - Specify "ALHT"
- ▶ Dutch Door Prep - Specify Door Handing, Bottom Door Leaf Length, and Clearance Between Leafs
- ▶ Electric Thru-Wire ETW8
- ▶ Electric Power Transfer Prep
- ▶ US32 (629) Polished Finish
- ▶ Welded Tips for Non-Rising Pins

#### HALF WRAP EDGE GUARD (EDGE MOUNT)



Fire-rated 3 hours on hollow metal doors and 90 minute on wood doors. Maximum size 4'0" x 10'0".



ANSI/BHMA Certified to A156.26 American National Standard for Continuous Hinges: Grade 1 - 150 lb. Door

Note: For Door Sizing Refer to Installation Instruction.

NGP-CHG-SS315-PCS-1220-A