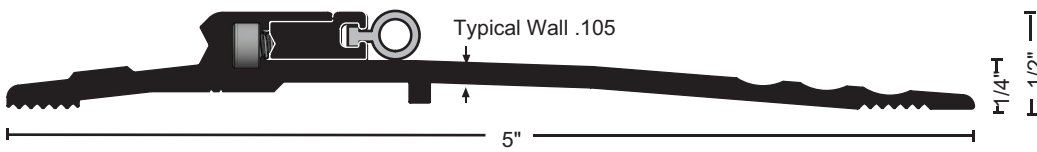
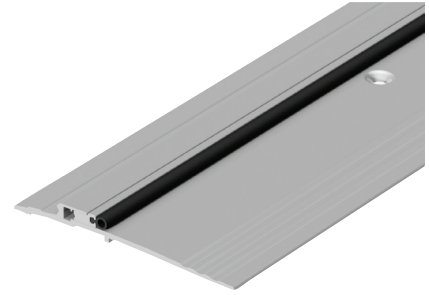


## Adjustable ADA Compliant Bumper Seal Threshold

- Stainless steel adjustment screws on 10" centers allow adjustment without re-positioning mounting location.
- Adjusting range 1/4"
- Adjust seal using 7/64" allen wrench



896-ADJ .78 lbs./ft.  
896DKB-ADJ .78 lbs./ft.



### MATERIALS & FINISHES

- Aluminum mill finish



- Optional: Slip Resistant SIA Finish

### FASTENERS

#10 x 1-1/2" FH zinc plated wood screws furnished.



### BUMPER SEAL

Seals against the door providing weather resistance

Vinyl ("V") supplied unless other material specified

Options:  
NGP-TPV ("N")

Silicone ("S")  STC 52